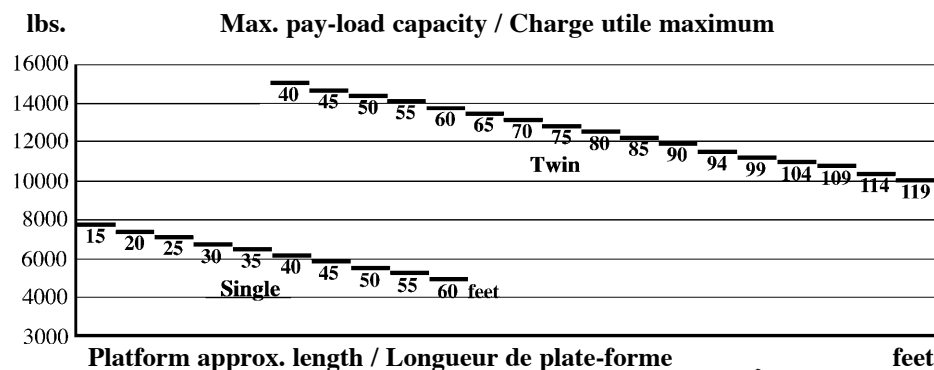
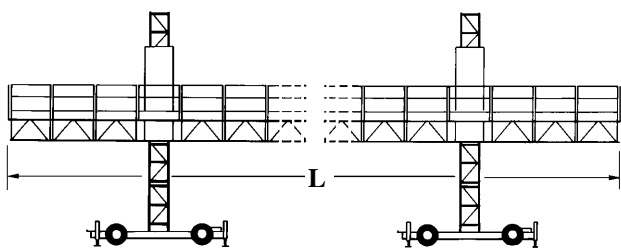


ALIMAK

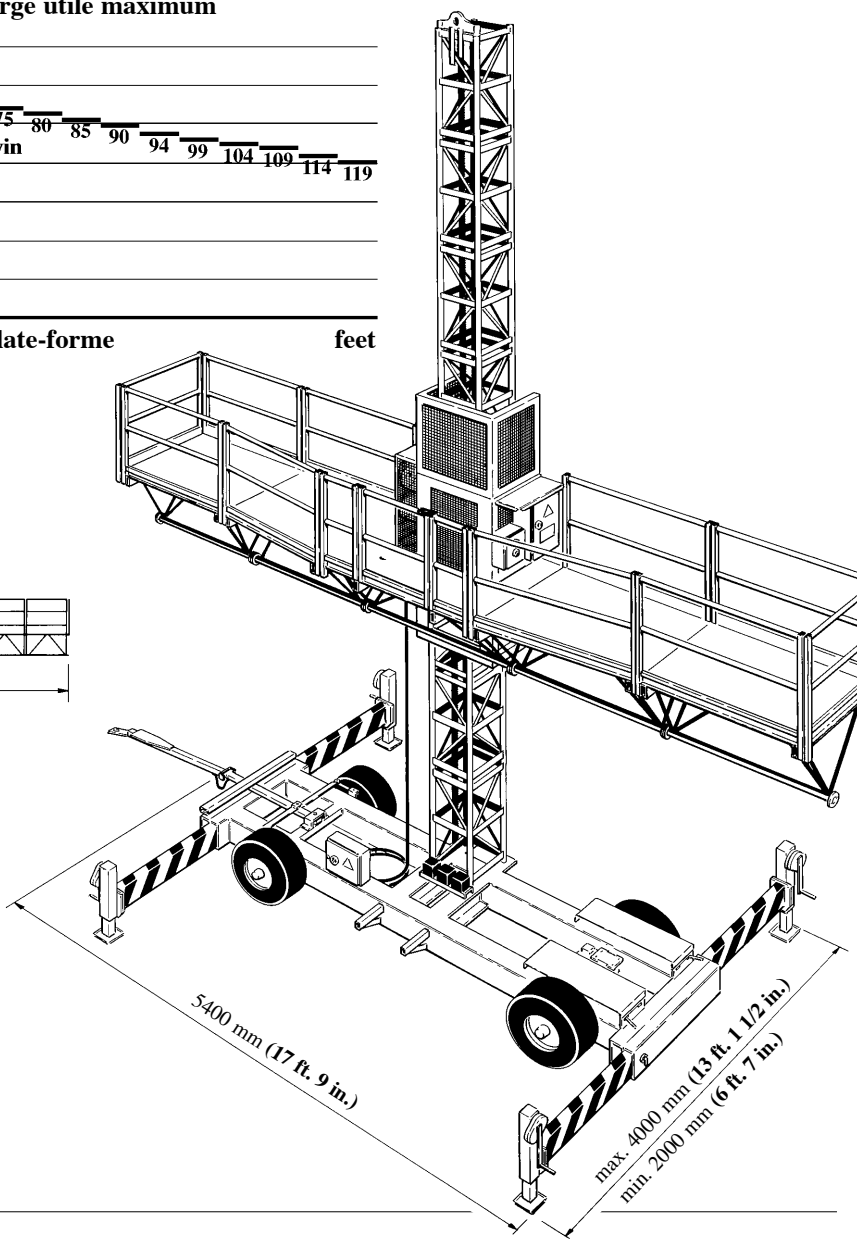
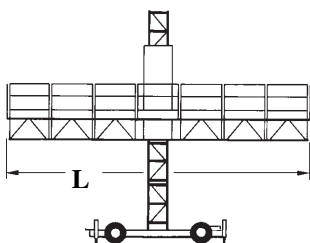
ALICLIMBER 6600



Twin / Duo



Single / Mono



TECHNICAL DATA

Capacity	Charge utile	Single	Twin
Min./max. platform length	Longueur min./max. plate-forme	15 ft. / 60 ft.	40 ft. / 119 ft.
Max. pay-load capacity	Charge utile maximum	7860 lbs	15000 lbs
Max. lifting height, untied mast with 4 completely extended outriggers. Out-/indoor installation	Hauteur autostable max. avec 4 stabilisateurs sortis Installation extérieure/intérieure		60 ft. / 98 ft.
Max. lifting height, tied mast	Hauteur utile maximum, mâts ancrés à la façade		330 ft.
<i>Increased lifting height on request</i>	<i>Hauteurs plus importantes sur demande</i>		
Tie distance	Distance entre ancras		50 ft.
Top overhang in operation/erection w. limited windspeed	Distance au-dessus du dernier ancrage, en service/pendant montage		20 ft. / 50 ft.
Vertical travel speed	Vitesse d'élévation verticale		28 ft./min.
Horizontal travel speed	Vitesse de déplacement horiz.		30 ft./min.

TECHNICAL DATA			
Dimensions and weights	Dimensions et poids	Single	Twin
Lowest transport height	Hauteur minimum au transport	9' 4"	
Height to platform	Hauteur jusqu'a la plate-forme	4' 11"	
Platform section: 1 x w	Elément de plate-forme: L x	4' 11" x 4' 11"	
Platform section: weight	Elément de plate-forme: Poids	287 lbs	
Mast section: Length	Elément de mât: Longueur	4' 11 ³ / ₈ "	
Mast section: Weight	Elément de mât: Poids	287 lbs	
Mobile chassis: 1 x w	Chassis mobile: L x 1	16' 1" x 6' 6 ¹ / ₄ "	
Mobile chassis: Weight	Chassis mobile: Poids	4300 lbs.	2 x 4300 lbs.
Base unit complete with 4.5 m platform length, 0 m lifting height and mobile chassis with horizontal drive	Unité de base, complete d'une longueur de plate-forme de 4.5 m, hauteur de levage 0 m et châssis mobile avec motorisation horizontal	8100 lbs.	2 x 8100 lbs.
Electrical data		Caractéristiques électriques	
Power–lifting machinery	Puissance–maschinerie de levage	2 x 3.45kW	4 x 3.45kW
Power–travel. machinery	Puissance–moteur de translation	1.7kW	2 x 1.7kW
Voltage/Frequency	Tension/fréquence	440V 60Hz	
Control voltage/Frequency 127V 60Hz	Télécommande/fréquence		
Starting current	Intensité de démarrage	60A	2 x 60A
Power consumption	Puissance absorbée	8kVA	2 x 8kVA
Power supply fuses	Fusibles puissance	25A	2 x 25A
Outlet for hand tool	Prises pour outillage manuel	2 x 1 Phase	
Safety equipment		Dispositifs de sécurité	
Limit switch in control circuit	Hors-course de sécurité sur circuit de commande	•	•
Phase failure relay	Controleur de phase	•	•
2 motor brakes, solenoid released	Frein a manque de courant	•	•
Mechanical safety device actuated at overspeed	Parachute mécanique a survitesse	•	•
Possibility to lower the platform at power failure	Descente de la plate-forme en cas de coupure de courant	•	•
Limit switch for levelling	Fin de course de nivelage	•	•

Above stated values are applicable for Aliclimber 6600 on mobile chassis only.

ALIMAK

P O Box 1950, Bridgeport, Connecticut 06601, Tel: +1-203-367-7400, Fax: +1-203-367-9251

Pictures are illustrative only and do not necessarily show the configuration of products on the market at the given point in time. Products must be used in conformity with safe practice and applicable statutes, regulations, codes and ordinances. Specifications of products and equipment shown herein are subject to change without notice.

Printed in Sweden